



## Memory 4GB /8GB 2400MHz CL17 DDR4

### SODIMM Apacer

#### DUO EFFICIENCY: POWER SAVING & PERFORMANCE

- 33% improvement in handling speed, at 2133Mbps and 17Gbps
- Extends 25% laptop battery performance with 1.2v

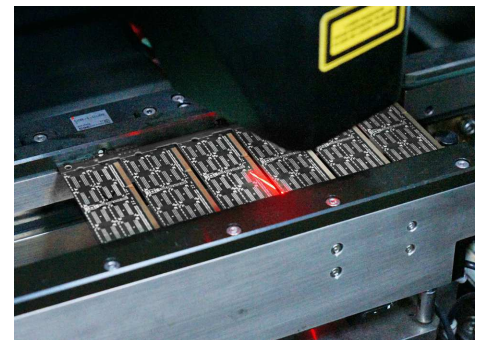


#### 100% COMPATIBILITY PERFORMANCE

Easy installation for the best of stability

#### QUALITY STRUCTURE

With Tested Compatibilty



#### Specification:

Frequency: 2400MHz

Capacity: 4GB/8GB

Voltage: 1.2V

Cas Latency: CL17

PIN: 260-pin

Certificate: RoHS, CE, FCC, RCM, VCCI, JEDEC

Package: Single Channel Package

More information:

Manufacturer site: [www.apacer.com](http://www.apacer.com)