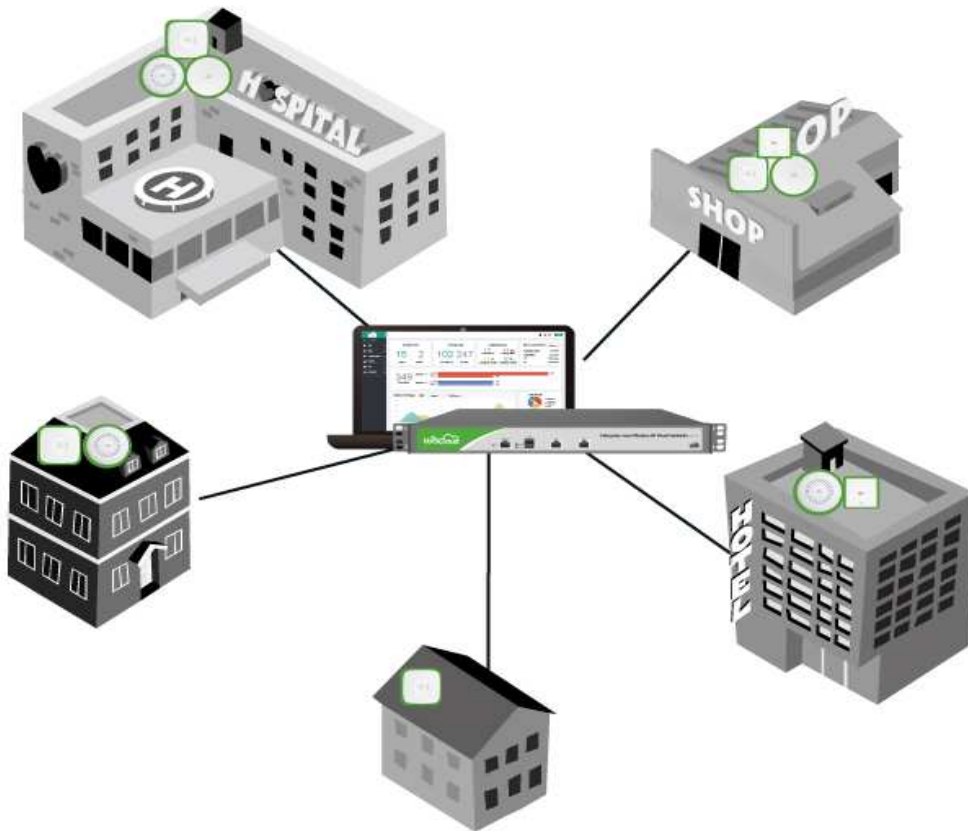


Wireless Base Station 1167Mbps AC Outdoor Wis WCAP-AC Cloud

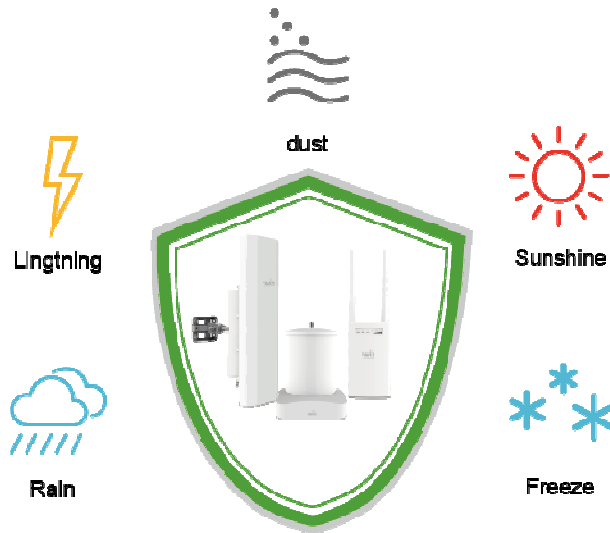
Product Overview

The WisCloud Indoor Access Point is the innovative series of products with remarkable performance in their features. All configuration and management is centrally and effectively operated by the WisCloud Controller.



Fantastically Durable for Outdoor

Integrating lightning protection,ESD protection,high durable temperature range and IP6X aluminum housing make it far more robust in different harsh outdoor environment.



Enterprise Level Radio Chip-set

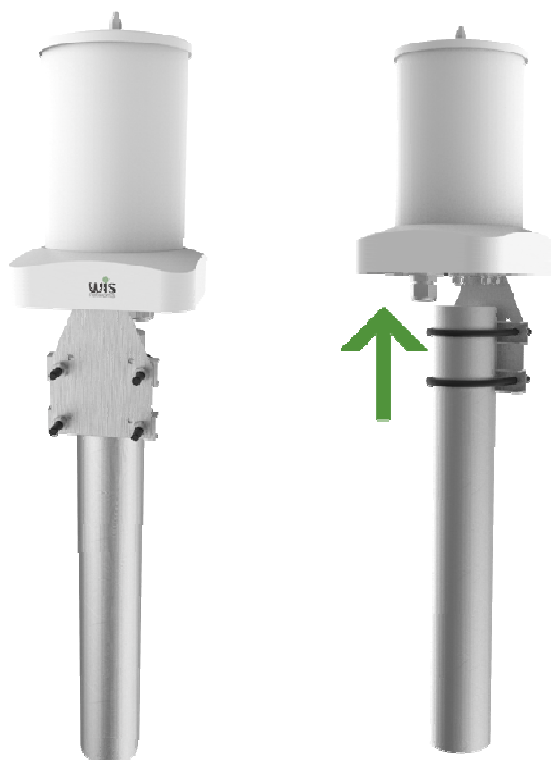
The high speed 720MHz Atheros CPU and 128MB DDR makes WisCloud access points much powerful to provide a stable connectivity and multifunctional wireless networks.



Easy Installation

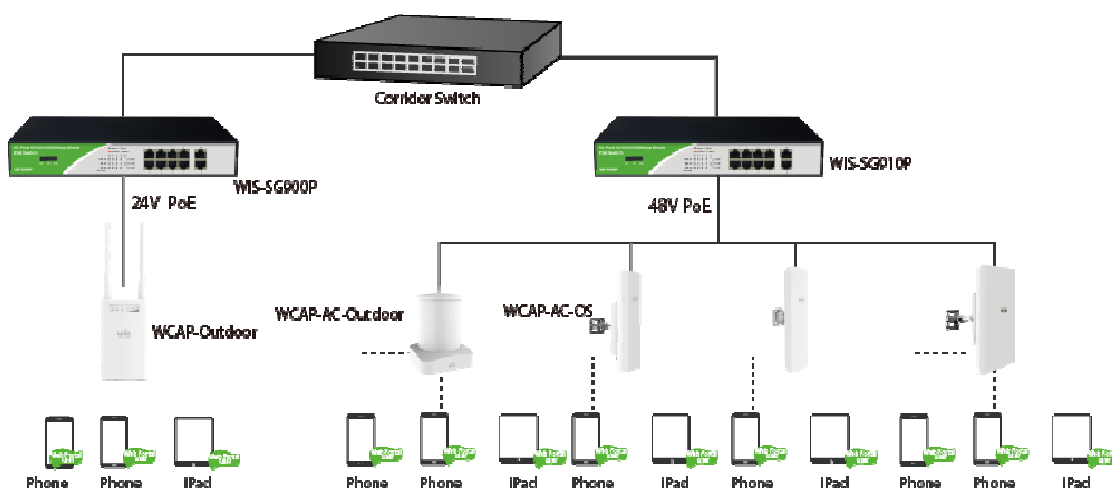
With our mounting kits, customers can easily mount it in different indoor conditions. While the AP is mounted on the ceiling or on the

wall, you can avoid most interference and extend your Wi-Fi coverage.



Support for Standard PoE

WisCloud Access Point is able to be supplied power by a power injector using 802.3af(48 VDC) PoE technology and make it more flexible to deploy the device in outdoor environment.



Cloud-Managed Wireless Networks

Deploy WisCloud AP and scale up easily without any on-site controllers, truly cloud architecture.



Physical Characteristics

Processor	Atheros SoC 720MHz
Flash / Memory	128MB DDR, 16MB Flash
LAN Port	1*10/100/1000M Gigabit
Button	Reset
Power	48VDC/0.32A 802.3af
Dimension	178*178*238mm
Mounting	Pole Mount
Certification	CE/RoHS
Max Power Consumption	15W
Working Temperature	-40°C~70°C
Working Humidity	10%~95% non-condensing

Wireless Characteristics

Wi-Fi Standard	802.11ac/n/a/g/b
Frequency	2.4GHz&5GHz

Speed	1167Mbps
Max Tx Power	30dBm
Antenna	6dBi Dual-Pola Omni
Multi-SSID	up to 8 SSID Per Radio
Wireless Security	WEP, WPA-PSK, WPA-Enterprise (WPA/WPA2, TKIP/AES)
Concurrent Clients	150+
Coverage Range	250m

Advanced Characteristics

Mode	Fat AP/Fit AP
VLAN	802.1q
Guest Policy	Web Portal/Password
MAC Filter	Blacklist
User QoS	Speed Limit by User Group
Traffic History	Duration/Download/Upload
Load Balance	Online User / Bandwidth
Roaming	Supported

More information:

www.wisnetworks.com



DECLARATION OF CONFORMITY

We, Importer/Distributor DOTMEDIA LTD

KATEVASIAS & NTALIAS 18 AXARNAI, GREECE

In accordance with the following Directives:

**EMC Directive 2004/108/EC, Low Voltage Directive 2006 /95/EC,
R&TTE Directive 1999/5/EC**

The product is compatible with the following norms/standards

<u>Applied Standards</u>	<u>Report No.</u>
Article 3.2 : Effective Use OF the Radio Spectrum ETSI EN 300 328 V1.7.1 (2006-10)	TEK-2013NT1213776R1 (07/01/2015)
Article 3.1b : Electromagnetic Compatibility ETSI EN 301 489-17 V2.2.1 (2012-09) ETSI EN301 489-1 V1.9.2 (2011-09)	NTEK-2013NT1213774E1 (07/01/2015)
Article 3.1a : Health and Safety ETSI EN 62311:2008 EN 60950-1:2006+A11:2009+A1:2010+A12:2011	NTEK-2013NT1213774H (07/01/2015) NTEK-2013NT1213776S (23/01/2015)

Hereby we declare that:

Equipment ACCESS POINTS
Model number
D5230/G5250/D523AC/WCAP/WCAP-AC-OS/WCAP-AC-OL
/WCAP-AC/WCAP-AC-L/WCAP-AC/WCAP-AC-PROM/WCAP/WCAP-
WS/WCAP-AC-W/WCAP-HP/WCAP V2-5pcs/WCAP-AC-L-
5pcs/WCAP-AC-5pcs/ WIS-S800AC/WIS-S806AC/
Brand name WISnetworks

Is in conformity with the applicable requirements of the following documents
I hereby declare that the equipment named above has been designed to comply with the
Relevant sections of the above referenced specifications. The unit complies with all
Applicable Essential Requirements of the Directives

Place and date of issue

AXARNAI, 09/03/2018

Signature

DOTMEDIA ΕΜΠΟΡΙΑ ΑΝΑΛΩΣΙΜΩΝ ΕΙΔΩΝ
& ΕΦΑΡΜΟΓΩΝ ΠΛΗΡΟΦΟΡΙΚΗΣ ΕΠΕ
ΧΩΝΔΡΙΚΟ ΕΜΠΟΡΙΟ ΚΑΙ ΕΠΙΧΕΙΡΗΣΙΑΚΟ ΣΕΒΑΣΜΟΥ
ΚΑΤΕΒΑΣΙΑΣ 18 & ΝΤΑΛΙΑΣ, ΑΧΑΡΝΕΣ Τ.Κ. 17671
Α.Φ.Μ.: 999075747 Δ.Ο.Υ.: ΑΧΑΡΝΩΝ
ΤΗΛ.: 210 2849836, 210 2840486, 210 2849419
FAX: 210 2446835

(Theodoros Mavroeidis)