



Model: WR300

# N300

Wi-Fi Router

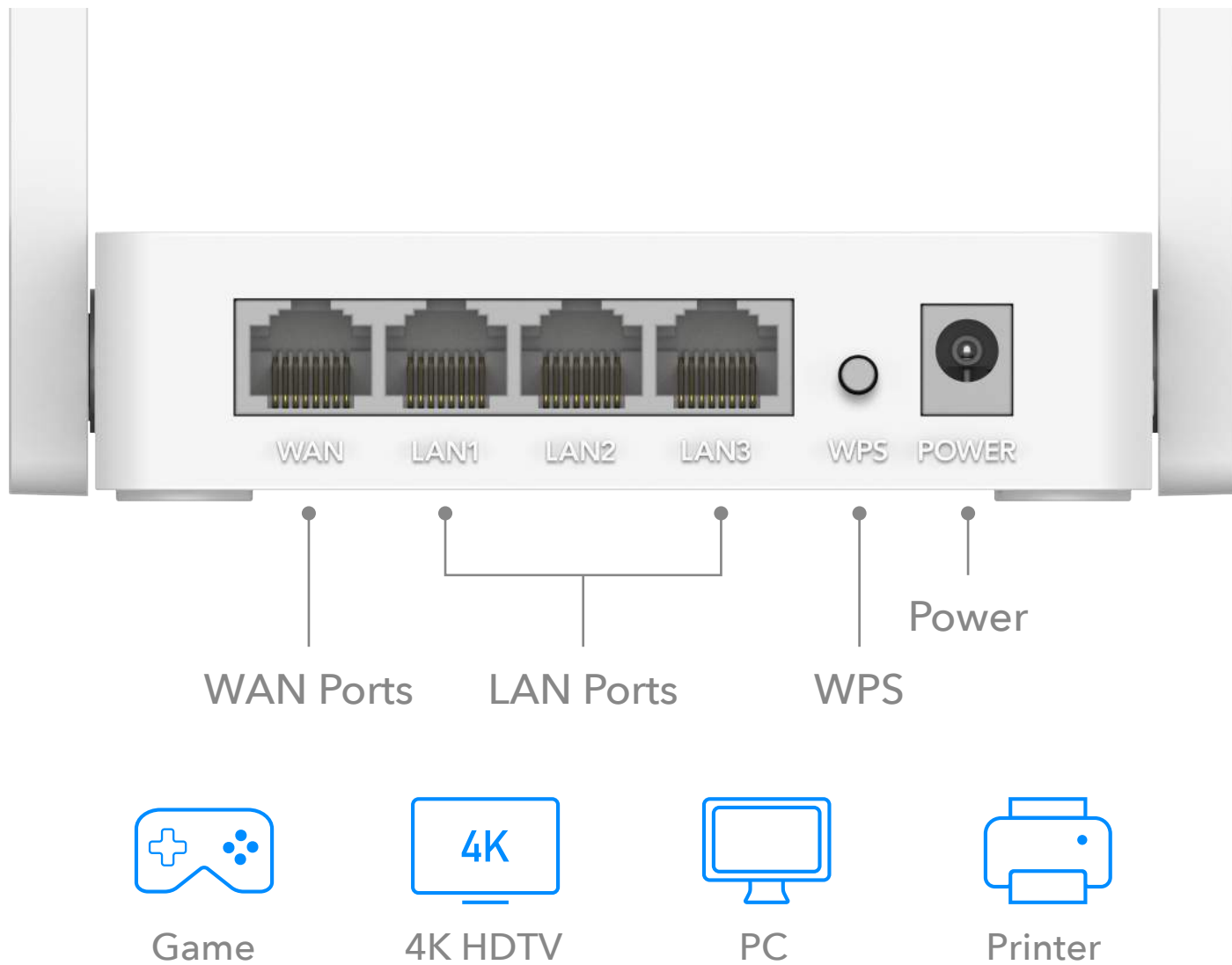
 Router/AP/RE/WISP Multi-Mode

 5 dBi Antennas

 IPv6/IPv4, IPTV/VLAN

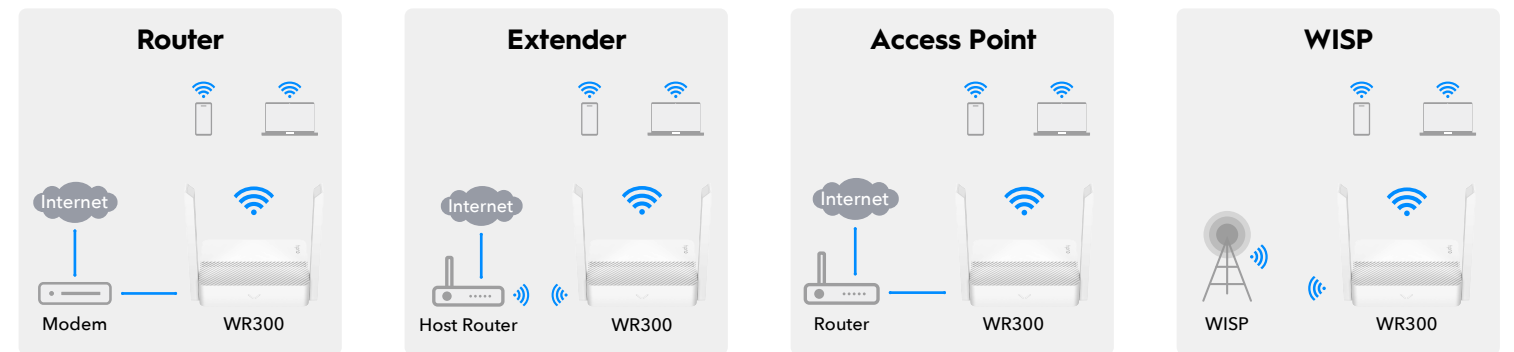
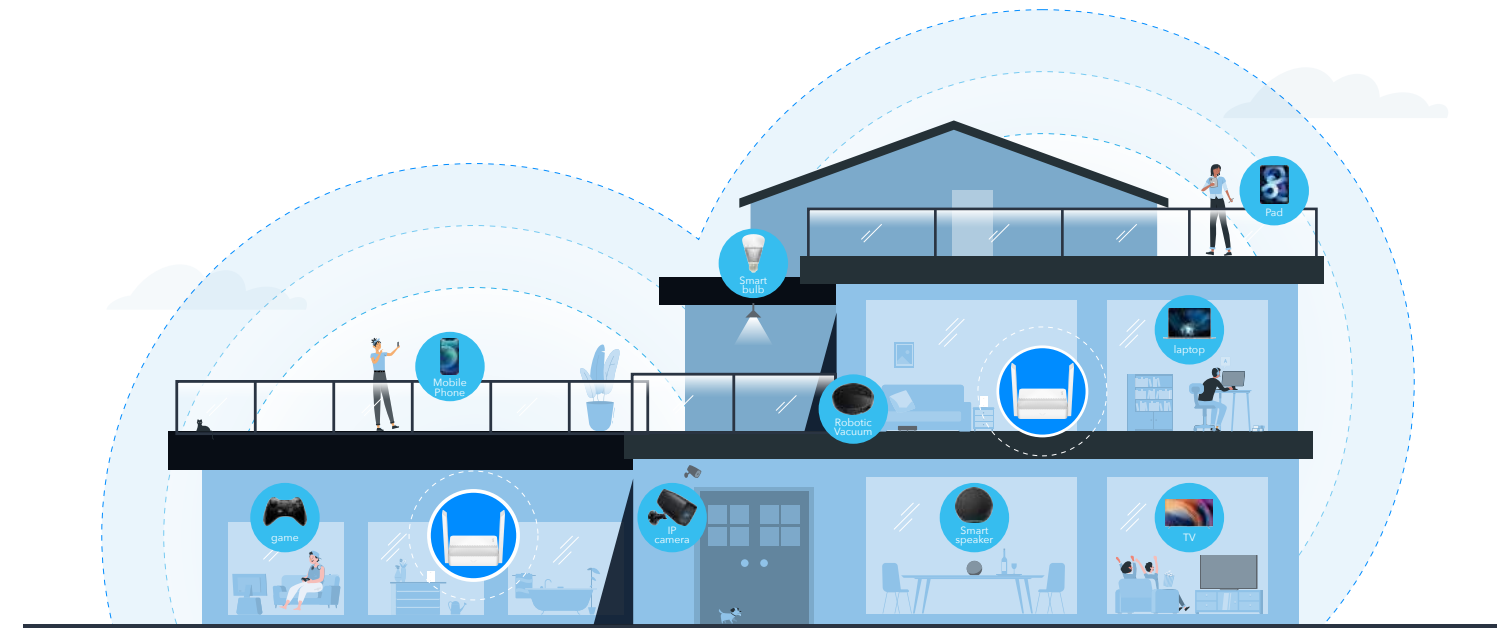


[Datasheet](#)



### Decent Wired and Wireless Home Network

Enjoy ample wired port selection to connect your console, PC, and TV, thanks to 1× WAN and 3× LAN Fast Ethernet ports. With two 5-dBi antennas and 2×2 MIMO technology, WR300 provides 2-stream fast Wi-Fi for smooth video streaming and downloading, suitable for small and medium houses.



### 5-in-1 Multi Mode with Add-On Mesh

5 working modes all in one compact-sized router serve different SOHO networking scenarios. When paired with a Mesh router/unit via Ethernet cable or wireless, WR300 functions as a Mesh satellite to enable fast roaming, allowing you to move between Wi-Fi zones without manually switching the networks.



### Powerful VPN Client

Equipped with VPN client in four popular protocols, allowing you to share VPN with the whole family by just setting it up once. Or assign a VPN to specific devices for access control and less interruption to other devices. WireGuard is recommended for its speed and security performance.



### Protect Privacy with DNS Encryption

DNS over TLS encrypts your DNS lookup request to prevent your browsing record from being recognized by your ISP hence they can not manipulate or sell your information to the online ads operator. The encryption also protects your privacy from stalking by hackers, improving online security.



### Versatile Network Management

Assign an online time for specific devices in the device management panel to regulate online behavior. The Domain Filter and IP filter allow you to block inappropriate website access for your family members, giving you peace of mind when setting up a network for your loved ones.

## Highlights

- 5-in-1 with Mesh satellite multi-mode caters to different-scenario needs
- Decent home networking with four ethernet ports and two antennas
- 2×2 MIMO provides two data streams to your phone, laptop, and tablet for smooth video streaming and downloading
- VPN client in four popular protocols allows you share VPN with family
- DNS over TLS feature protects your browsing record from stalking
- Wi-Fi Schedule, Domain/IP Filter help regulate the online behaviour

## Hardware

Processor	580 MHz CPU
Flash	64 Mbit (8 MB)
DDR	512 Mbit (64 MB)
Antennas	2× Fixed Omni-Directional Antennas
Interfaces	1× 10/100 Mbps WAN Port 3× 10/100 Mbps LAN Ports
Buttons	WPS Button, Reset Button
Dimension (W×D×H )	118×80×27.5 mm (4.65×3.15×1.08 inches)

## Wireless

Wireless Standards	IEEE 802.11n/b/g 2.4 GHz
Frequency	2.4 GHz
Signal Rate	300 Mbps (2.4 GHz) Compatible with 802.11b/g/n Wi-Fi standards
Transmit Power	CE: <20 dBm (2.4 GHz) FCC: <30 dBm (2.4 GHz)
Wireless Modes	Enable/Disable Wireless Radio, WMM
Wireless Security	WPA-PSK, WPA2-PSK, WPA-PSK/WPA2-PSK

## Software

WAN Type	Dynamic IP/Static IP/PPPoE
DHCP	Server, DHCP Client List, Address Reservation
Guest Network	2.4 GHz Guest Network × 1
NAT	Port Forwarding, Port Triggering, UPnP, DMZ
Working Modes	Router/AP/RE/WISP/Mesh Satellite
CWMP Protocols	TR069 / TR098 / TR111 / TR181
ACS Server Compatibility	GenieACS, OpenACS
Management	Access Control, Local Management, Remote Management, Wake on LAN
TTL	Extend/Spoof/Custom
DNS	Cloudflare*/Google*/Quad9*/ Custom
VPN Client	WireGuard/OpenVPN/L2TP/PPTP
VLAN	Tag VLAN / IPTV
Internet Protocols	IPv4 / IPv6
IPv6	Relay Dynamic (SLAAC/DHCPv6) Static (Fixed IP) Passthrough MAP-E (Dual-stack) DS-Lite (Dual-stack)

\* To be decided

## Others

Package	Wi-Fi Router
Contents	Power Adapter
	RJ45 Ethernet Cable
	Quick Installation Guide
Environmental Requirements	Operating Temperature: 0 °C ~ 40 °C (32 °F ~ 104 °F)
	Storage Temperature: -40 °C ~ 70 °C (-40 °F ~ 158 °F)
	Operating Humidity: 10% ~ 90% non-condensing Storage Humidity: 5% ~ 90% non-condensing
System Requirements	Windows, macOS, Android, iOS, or other OS with networking capability Firefox, Chrome, Safari, Edge, or other up-to-date web browsers Cable/DSL/ONT modem or other internet source devices Internet subscription with ISP or carriers

## CE DECLARATION OF CONFORMITY

For the following equipment:

**Product Name:** 300Mbps Wi-Fi Router

**Model Number:** WR300

**Trademark:** Cudy

We declare under our own responsibility that the above product satisfies all the technical regulations applicable to the product within the scope of Council Directives:

**Directive 2014/53/EU, Directive 2011/65/EU, Directive (EU) 2015/863**

The above product is in conformity with the following standards or other normative documents:

**Final draft ETSI EN 301 489-1 V2.2.2: 2019**

**Draft ETSI EN 301 489-17 V3.2.0: 2017**

**ETSI EN 300 328 V2.1.1: 2016:**

**EN 62311: 2008EN 55032: 2015**

**EN 61000-3-2: 2014 EN 61000-3-3: 2013**

**EN 55024:2010+A1:2015 EN 62368-1:2014+A11:2017.**

**IEC 62321-1:2013, IEC 62321-2:2021,  
IEC 62321-3-1:2013, IEC 62321-5:2013,  
IEC 62321-4:2013+AMD1:2017 CSV,  
IEC 62321-6:2015, IEC 62321-7-1: 2015,  
IEC 62321-7-2:2017, IEC 62321-8:2017**

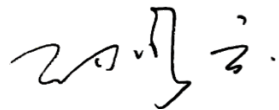
Person responsible for making this declaration:

Sun Qiaoyun

Regulatory Compliance Manager

Place of issue: Shenzhen, China

Date of issue: 2022-8-23



Shenzhen Cudy Technology Co., Ltd.

Room A606, Gaoxinqi Industrial Park, Liuxianyi Road, Baoan District, Shenzhen, China

[www.cudy.com](http://www.cudy.com)

## ΔΗΛΩΣΗ ΣΥΜΜΟΡΦΩΣΗΣ

Για τον ακόλουθο εξοπλισμό:

**Όνομα Προϊόντος:** 300Mbps Wi-Fi Router

**Αριθμός Μοντέλου:** WR300

**Εμπορικό Σήμα:** Cudy

Διακηρύσσουμε με κάθε ευθύνη ότι το παραπάνω προϊόν συμμορφώνεται με όλους τους τεχνικούς κανονισμούς που ισχύουν για το προϊόν, εντός του αντικειμένου των Κοινοτικών

Οδηγιών:

**Οδηγία 2014/53/ΕΕ, Οδηγία 2011/65/ΕΕ, Οδηγία (ΕΕ) 2015/863**

Το παραπάνω προϊόν βρίσκεται σε συμμόρφωση με τα ακόλουθα πρότυπα ή άλλα έγγραφα συμμόρφωσης

**Final draft ETSI EN 301 489-1 V2.2.2: 2019**

**Draft ETSI EN 301 489-17 V3.2.0: 2017**

**ETSI EN 300 328 V2.1.1: 2016:**

**EN 62311: 2008 EN 55032: 2015**

**EN 61000-3-2: 2014 EN 61000-3-3: 2013**

**EN 55024:2010+A1:2015**

**EN 62368-1:2014+A11:2017.**

**IEC 62321-1:2013, IEC 62321-2:2021,**

**IEC 62321-3-1:2013, IEC 62321-5:2013,**

**IEC 62321-4:2013+AMD1:2017 CSV,**

**IEC 62321-6:2015, IEC 62321-7-1: 2015,**

**IEC 62321-7-2:2017, IEC 62321-8:2017**

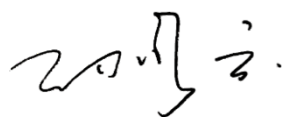
Υπεύθυνος για τη δήλωση αυτή:

Sun Qiaoyun

Διευθυντής κανονιστικής συμμόρφωσης

Τόπος έκδοσης: Shenzhen, Κίνα

Ημερομηνία έκδοσης: 2022-8-23



Shenzhen Cudy Technology Co., Ltd.

Room A606, Gaoxinqi Industrial Park, Liuxianyi Road, Baoan District, Shenzhen, China

[www.cudy.com](http://www.cudy.com)