



# LogiLink®

## TV Floor Stand with V-Base For 49"-70" Monitor

Art. No.: BP0079  
BP0080

V-base designed TV floor stand makes your room/office looking more stylish and upgrades the viewing experience.



RoHS  
compliant



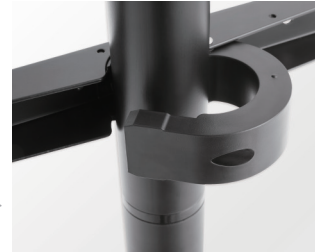
\* The specifications and pictures are subject to change without notice.  
\*All trade names referenced are the registered namework of their respective owners.

Made in China

# LogiLink®

## TV Floor Stand with V-Base For 49"-70" Monitor

Art. No.: BP0079  
BP0080



**Snap Lock Design**  
For easier and quicker TV assembly.



**Cable Management**  
Easy cable management keeps everything organized.



**V-Base Design**  
Ensure a long life and stability.



**Rubber Pads**  
Prevent slippery and floor-scratching.

Best Connectivity



RoHS  
compliant



\* The specifications and pictures are subject to change without notice.  
\* All trade names referenced are the registered namework of their respective owners.

Made in China

# LogiLink®

## TV Floor Stand with V-Base For 49"-70" Monitor

Art. No.: BP0079  
BP0080



### Anti-Tip TV Safety Strap

Prevent TV tip-over and ensure children's safety.



Best Connectivity



RoHS  
compliant



\* The specifications and pictures are subject to change without notice.  
\* All trade names referenced are the registered trademark of their respective owners.

Made in China

# LogiLink®

## TV Floor Stand with V-Base For 49"-70" Monitor

Art. No.: BP0079  
BP0080



### Specification:

|                 |   |
|-----------------|---|
| Screen Size     | 49"-70"   |
| Weight Capacity | 40kg/88lbs  |
| VESA            | 200x200, 300x200, 300x300, 400x200, 400x300, 400x400, 600x400 |
| Material        | Aluminum, Steel   |
| Product Size    | 1345 x 887 x 516mm  |

| Art-No. | Color         | EAN Code      |
|---------|---------------|---------------|
| BP0079  | Black         | 4052792055443 |
| BP0080  | Bright Chrome | 4052792055450 |

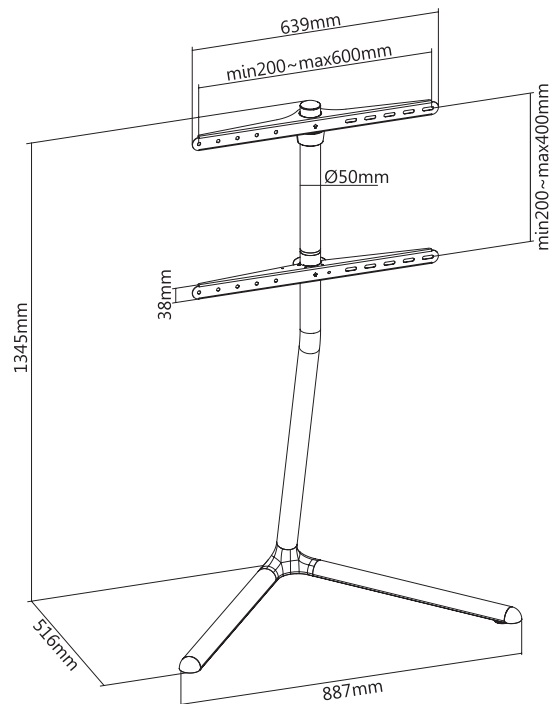


### Package Content:

- » 1 x TV Floor Stand
- » 1 x Screw Package
- » 1 x User Manual

### Package Information:

| Art-No. | Packing Dimension  | Packing Weight | Carton Dimension  | Carton Q'ty | Carton Weight |
|---------|--------------------|----------------|-------------------|-------------|---------------|
| BP0079  | 1075 x 280 x 188mm | 8.8kg          | 1090 x 295x 395mm | 2pcs        | 18.98kg       |
| BP0080  | 1075 x 280 x 188mm | 8.36kg         | 1090 x 295x 395mm | 2pcs        | 17.37kg       |



\* The specifications and pictures are subject to change without notice.  
\*All trade names referenced are the registered namework of their respective owners.

Made in China

Best Connectivity