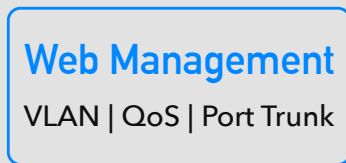
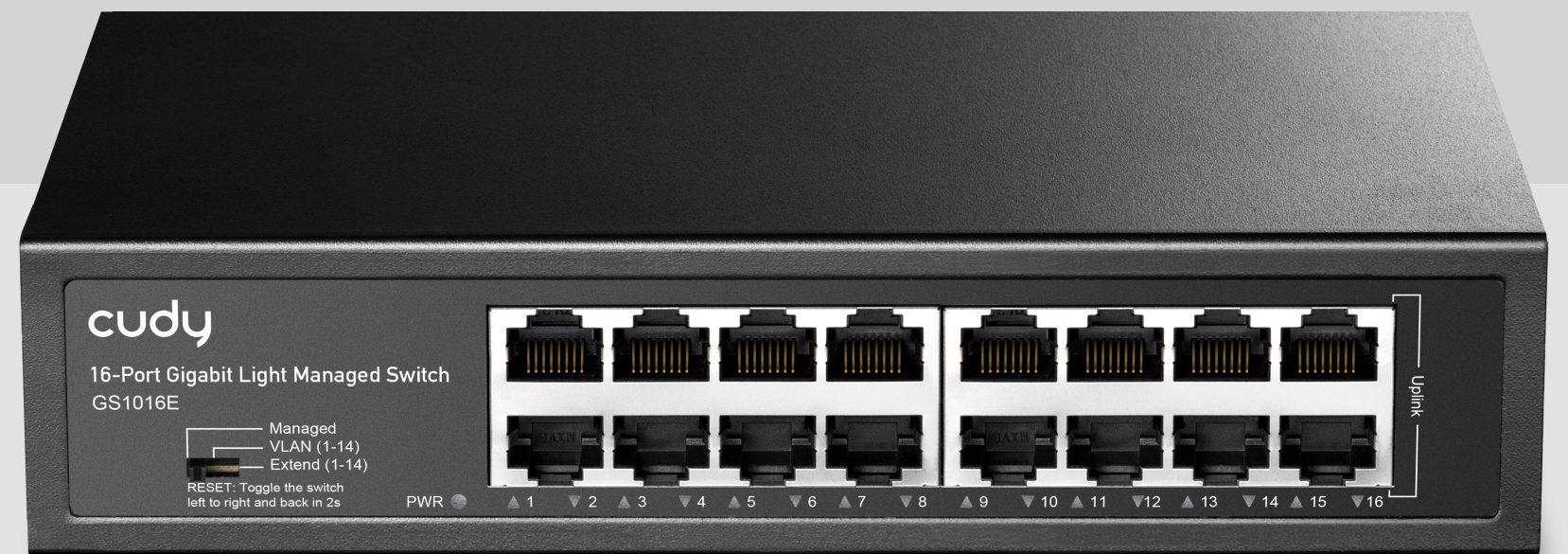




Model: GS1016E

16-Port Gigabit Light Managed Switch



[Datasheet](#)

Highlights

A 16-GbE switch with management features.

- 16× GbE
- Web Management, SNMP
- VLAN (802.1Q/MTU/Voice/Port-Based)
- QoS (802.1p/DSCP/Port-Based)
- Port Mirror, Static Aggregation, etc
- STP/RSTP and Loop Prevention
- DHCP Snooping, IGMP Snooping
- EEE (802.3az Power Saving)
- Managed/VLAN/Extend Preset Modes
- Desktop, Rack-Mount
- 200×118×44 mm (7.87×4.65×1.73")

Package Content

- GS1016E
- Power Cord
- Installation Guide
- Mounting Kit

Hardware Specs

Memory/Storage	Flash/ROM	8 MB (64 Mbit) NOR
Interfaces	Physical Buttons	Managed/VLAN/Extend DIP Switch
	Gigabit RJ45 Ports	16
	Extend Mode Ports	#1~#14
	VLAN Mode Ports	#1~#14
	LED	Power Speed/Link/ACT of Each Ethernet Port
	Power Input	AC Inlet
Performance	Copper Speed and Distance	Cat. 3 or higher cable: 100 meters at 10 Mbps
		Cat. 5 or higher cable: 100 meters at 100 Mbps
		Cat. 5e or higher cable: 100 meters at Gigabit
		Cat. 5e or higher cable: 250 meters at 10 Mbps
		Cat. 6 or higher cable: 150 meters at Gigabit
	Copper Speed and Distance Note	250-meter transmission is only available on the Extend Mode ports.
	MAC Address Table	8192
	Max Switching Capacity	32 Gbps
	Max Forwarding Rate	23.808 Mpps
	Jumbo Frame	15 KB
Packet Buffer	4 Mbit	
Power	Power Saving	Support
	Power Methods	AC
	AC	90~260V 50/60Hz
	Max Power Consumption	7.8W
	Idle Power Consumption	4.5W

Hardware Specs

Reliability	Grounding Methods	Three-Prong Plug Grounding Point	
	Lightning/Surge Protection	RJ45: 4KV AC: CM 4KV/DM 2KV	
	ESD Contact Protection	6KV	
	ESD Air Protection	8KV	
	Environment	Operating Temperature:	0 °C ~ 40 °C (32 °F ~ 104 °F)
		Storage Temperature:	-40 °C ~ 70 °C (-40 °F ~ 158 °F)
Operating Humidity:		10% ~ 90% non-condensing	
Storage Humidity:		5% ~ 90% non-condensing	
Mechanical	Dimension	200×118×44 mm 7.87×4.65×1.73 inches	
		Casing Material	Metal
	Installation	Desktop Rackmount via Brackets	

Software Specs

Switching	802.3 Protocols	802.3x Flow Control
		802.3i 10BASE-T
		802.3u 100BASE-T
		802.3ab 1000BASE-T
		802.3az Power Saving
		802.1 Protocols
	Port Management	Port On/Off
		Port Negotiation Speed
		Port Trunk (Static Aggregation)
		Port Mirror
		Data Rate Limit
		Jumbo Frame Settings
		Storm Control
		Traffic Monitor
MAC Address Management		
EEE (802.3az)		
Port Trunk Groups	4	
Max Port per Port Trunk Groups	8	



Software Specs

Switching	L2 Features	IGMP Snooping
		Loop Prevention
		DHCP Snooping
		STP/RSTP
		LLDP Config and Neighbors
		MTU VLAN
		Port-Based VLAN
		802.1Q VLAN
		Voice VLAN
		DSCP QoS
		802.1p QoS
		Port-Based QoS

System	Control Methods	Config Web Page
		SNMP V1/V2
	Firmware Upgrade	Local Upgrade
	Reliability	Backup and Restore
	Diagnostic Tools	Cable Status/Length Diagnosis
		Ping
	Languages	English
		Bengali
		German
		Spanish
		French
		Portuguese
		Russian
		Arabic
		Indonesian
		Hindi
		Urdu
		Traditional Chinese
		Simplified Chinese

CE DECLARATION OF CONFORMITY

For the following equipment:

Product Name: 16-Port Gigabit Light Managed Switch

Model Number: GS1016E

Trademark: Cudy

We declare under our own responsibility that the above product satisfies all the technical regulations applicable to the product within the scope of Council Directives:

Directive 2014/30/EU, Directive 2014/35/EU, Directive 2011/65/EU, Directive (EU) 2015/863

The above product is in conformity with the following standards or other normative documents:

EN 55032:2015+A1:2020

EN IEC 61000-3-2:2019+A1:2021

EN 61000-3-3:2013+A2:2021

EN 55035:2017+A11:2020

EN IEC 62368-1:2020+A11:2020

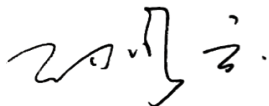
Person responsible for making this declaration:

Sun Qiaoyun

Regulatory Compliance Manager

Place of issue: Shenzhen, China

Date of issue: 2024-12-23



DEKLARATION OM ÖVERENSSTÄMMELSE

För följande utrustning:

Produktnamn: 16-Port Gigabit Light Managed Switch

Modellnummer: GS1016E

Varumärke: Cudy

Vi tillkännager under vårt ECet ansvar att ovanstående produkt uppfyller alla tekniska bestämmelser som gäller för produkten inom ramen för rådets direktiv:

Direktiv 2014/30/EU, Direktiv 2014/35/EU, Direktiv 2011/65/EU, Direktiv (EU)2015/863

Ovanstående produkt överensstämmer med följande standarder eller andra normativa dokument:

EN 55032:2015+A1:2020

EN IEC 61000-3-2:2019+A1:2021

EN 61000-3-3:2013+A2:2021

EN 55035:2017+A11:2020

EN IEC 62368-1:2020+A11:2020

Person som ansvarar för att göra denna deklARATION:

Sun Qiaoyun

chef för efterlevnad av lagstiftningen

Plats för utfärdande: Shenzhen, Kina

Datum för utfärdande: 2024-12-23

